



# SUPPLEMENT

TO THE

# NEW ZEALAND GAZETTE

OF

THURSDAY, 4 DECEMBER 1958

*Published by Authority*

---

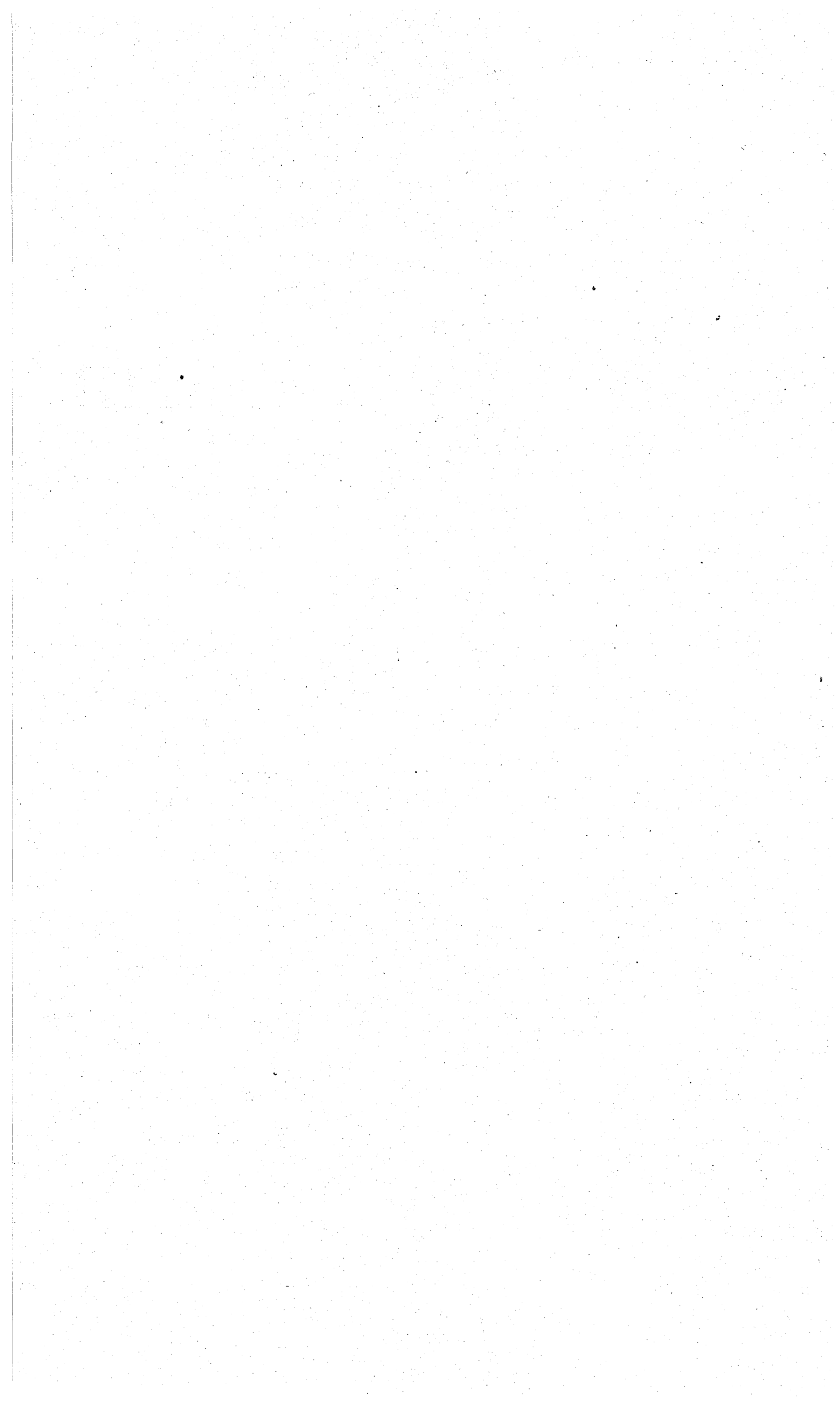
WELLINGTON: WEDNESDAY, 10 DECEMBER 1958

---

NEW ZEALAND GOVERNMENT RAILWAYS

---

# ALTERATION TO GENERAL SCALE OF CHARGES



*Alterations to the Scales of Charges Upon the New Zealand Government Railways*

PURSUANT to the Government Railways Act 1949, the Minister of Railways hereby makes the following alterations to the General Scale of Charges made on the 21st day of May 1957 and published in the Supplement dated the 28th day of May 1957 to the *New Zealand Gazette* of the 23rd day of May 1957, and to the Local Rates Scale of Charges made on the 25th day of February 1957 and published in the Supplement dated the 6th day of March 1957 to the *New Zealand Gazette* of the 28th day of February 1957, in force on the New Zealand Government Railways.

**GENERAL SCALE OF CHARGES****PASSENGERS****8. Miscellaneous Concession Fares**

Paragraph 4, subparagraph (a): *Add* to the list of organisations, the following:

Red Cross Cadets.  
Red Cross Link Cadets.

**19. Bulk Travel Vouchers**

*Omit* this regulation, and *substitute* the following:

1. **Charges**—Bulk travel vouchers, entitling the purchaser thereof to be issued tickets, without further charge, available for travel by the Department's road motor services (other than bus services on suburban routes, sightseeing trips and special tours) and/or by rail, first or second class, will be issued at the following rates:

	£	s.	d.
For 2,000 miles .. .. .	17	10	0
For 3,000 miles .. .. .	25	10	0
For 4,000 miles .. .. .	32	0	0
For every additional 1,000 miles beyond 4,000 miles	6	0	0

The vouchers will be negotiable for a maximum period of 12 calendar months and the aggregate mileage of all tickets issued in respect of any voucher shall not exceed the total mileage covered by such voucher.

**Conditions**—2. Tickets covering each journey to be made must be held and such tickets will be issued on presentation of the voucher at any railway or railway road service booking office or to the driver of any railway road motor vehicle.

3. Application for a bulk travel voucher must be lodged with any District Manager, Station-master, or officer in charge of a road motor service depot at least seven days before the voucher is required.

4. Bulk travel vouchers will be issued in the names of a firm, individual, or Government Department, and on application will be transferred without charge. Tickets issued in respect of bulk travel vouchers will also be transferable.

**LOCAL FARES AND REGULATIONS****32. Local Fares: General**

Paragraph 6: *Omit* the figure "6" in two places, and *substitute* the figure "5".

**34. Wellington District**

*Insert* the following new paragraph:

10. School season tickets, subject in all other respects to the provisions of regulation 21, will be issued on the Paekakariki-Wellington, Johnsonville-Wellington, and Upper Hutt-Melling-Wellington lines for journeys not exceeding 3 miles at the following charges:

	Per Term		
	£	s.	d.
For students and scholars not exceeding 16 years of age .. .. .	0	15	0
For students and scholars over 16 years and not exceeding 20 years of age	1	10	0

LUGGAGE, PARCELS, ETC.

45. Checked Luggage

Paragraph 7, subparagraph (a): *Omit* this subparagraph, and *substitute* the following:

	For First Four Weeks or Part Thereof	For Each Additional Week or Part Thereof
(a) Checked luggage, not otherwise specified .. ..	Free	2s. per package or article.

46. Excess Luggage

Paragraph 13. Inter-Island Excess Rates:

*Insert:*

Motor scooters .. .. .	£	s.	d.
Powered tandem cycles.. .. .	1	15	0
		1	6
			3

49. Lost Luggage

Paragraph 1, subparagraph (a): *Omit* this subparagraph, and *substitute* the following:

	Lost Property Fee Which Covers Storage for One Week Excluding Date Found	For Next Three Weeks	For Each Additional Week or Part Thereof
(a) Per package or article, except a motor cycle or motor cycle with sidecar attached	s. d. 0 6 per week or part thereof	s. d. 0 6 per week or part thereof	s. d. 2 0

50. Left Luggage

Paragraph 1: *Omit* the first schedule from this paragraph, and *substitute* the following:

	Fee Which Covers Storage for One Week Excluding Date of Deposit	Next Three Weeks, per Week or Part Thereof	For Each Additional Week or Part Thereof
Per package or article, n.o.s. .. .. .	s. d. 0 6	s. d. 0 6	s. d. 2 0
Per bicycle (pedal) .. .. .	0 6	0 6	2 0
* Per bicycle (pedal), motor-propelled .. .. .	1 0	1 0	2 0
Per package or article tendered at the Department's wharf booking offices at Auckland or Wellington for transport to and storage at the local station .. .. .	†0 6	0 6	2 0

## GOODS, LIVESTOCK, PARCELS, AND LUGGAGE

## 68. Classification of Goods, Livestock, etc.

## Paragraph 4:

## Omit:

	Class
Asbestos-cement products as under—	
Builders' requisites including ventilators, skylights, downpipe, guttering, etc. . . . . See regulation 77	N.
Benzine, kerosene, and similar mineral oils, in bulk in owner's tank wagons which must be loaded to the full carrying capacity <i>Dangerous</i>	C less one-eleventh.
Caravans . . . . . At the rate for motor vehicles (Regulation 83)	
Concrete articles as under—	
Building slabs, plain . . . . . See regulation 77	N.
Cork slabs . . . . .	G. (Meas. rate).
Dishes and trays, plastic, per refrigerators . . . . .	G. (Meas. rate).
Display stands, wire, for seed exhibition . . . . .	C. Double rate.
Empties as under—	
Empty packages, returned . . . . . See regulation 88	
Empty packages (not returned), not otherwise specified . . . . .	C plus 50%.
Hydrator trays, plastic, for refrigerators . . . . .	G. (Meas. rate).
Iron or steel, as under—	
Angle, bar, channel, rod, hoop, sheet, or plate, also rolled steel sections, not prepared in any way, not otherwise specified . . . . .	D.
Angle, bar, rod, hoop, sheet, or plate, manufactured, not otherwise specified . . . . .	C.
Kerosene, in bulk, in owner's tank wagons, which must be loaded to the full carrying capacity . . . . .	C less one-eleventh.
Metal type for remelting . . . . .	D.
Oil, crude, diesel, or fuel*—	
In bulk in the Railways Department's tank wagons. Such tank wagons to be loaded to their full carrying capacity . . . . .	C.
In owner's tank wagons. Such tank wagons to be loaded to their full carrying capacity . . . . .	D.
Plastic dishes and trays for refrigerators . . . . .	G. (Meas. rate).
Printing metal for remelting . . . . .	D.
Pumps, petrol, with glass reservoir totally or partially exposed . . . . .	C plus 50%.
Pumps, petrol, with glass reservoir securely packed . . . . .	C plus 20%.
Racks, calf, cattle, or sheep feeding . . . . .	G. (Meas. rate).
Refrigerator panels (pressed steel or plastic) and kerosene-burner units when accompanying same . . . . .	C plus 20%.
Refrigerator trays and dishes, plastic . . . . .	G. (Meas. rate).
Slabs and door-frames made of concrete to be used in the construction of silos . . . . . See regulation 77	N.
Slabs, concrete, for paving purposes . . . . . See regulation 77	N.
Slabs, concrete, not otherwise specified . . . . .	D.
Tanks, beer or milk, stainless steel—	
Not exceeding 150 gallons capacity, as 7 cwt each . . . . .	C plus 50%.
Exceeding 150 gallons, but not exceeding 300 gallons capacity, as 12 cwt each . . . . .	C plus 50%.
Exceeding 300 gallons, but not exceeding 500 gallons capacity, as 15 cwt each . . . . .	C plus 50%.
Exceeding 500 gallons capacity, but not exceeding 1,000 gallons capacity, as 1 ton each . . . . .	C plus 50%.
Exceeding 1,000 gallons capacity, minimum charge as for 30 cwt each (or actual weight if greater) . . . . .	C plus 50%.
Timber, plywood . . . . .	C.
Trays and dishes, plastic, for refrigerators . . . . .	G. (Meas. rate).
Type, metal for remelting . . . . .	D.
Vats, cheese, and covers for same . . . . .	C.
Vats, cream, freezing . . . . .	C.
Wheelbarrows, steel, two or more per consignment, unassembled, trays to be nested . . . . .	C.
Wire, as under—	
Display stands for seed exhibition . . . . .	C. Double rate.
Wool bins, movable (minimum charge as for 1 ton per consignment) . . . . .	C.
Yomanite (sand and cement mixture) . . . . .	D.

GOODS, LIVESTOCK, PARCELS, AND LUGGAGE—*continued*68. Classification of Goods, Livestock, etc.—*continued*Paragraph 4—*continued*

<i>Insert:</i>	Class
Aluminium products as under—	
Window frames .. .. .	C plus 50%.
Asbestos-cement products as under—	
Builders' requisites including ventilators, skylights, downpipe, guttering, etc., and fittings for same .. .. . See regulation 77	N.
Baskets, plastic .. .. .	G. (Meas. rate).
Benzine, kerosene, and similar mineral oils, in bulk in owner's tank wagons, which must be loaded to the full carrying capacity. <i>Dangerous</i> See regulation 89	
Caravans, in cases .. .. .	C plus 50%.
Caravans, not otherwise specified: At the rate for motor vehicles (Regulation 83)	
Cement, fire .. .. .	C.
Chipboard .. .. .	C.
Concrete articles as under—	
Slabs, building, plain .. .. . See regulation 77	N.
Core board .. .. .	C.
Cork slabs .. .. . See Insulating materials	
Display stands, wire .. .. .	C. Double rate.
Empties as under—	
Empty containers, returned .. .. . See regulation 88	
Empty containers (not returned), not otherwise specified .. .. .	C plus 50%.
Empty tank wagons .. .. . See regulation 89	
Feathers, in bales, pressed .. .. .	C.
Fish as under—	
*“Deep” or “quick” frozen, in cartons .. .. .	C.
Hydatid killers, tip-over type, in cartons .. .. .	C plus 50%.
Insulating materials, as under, not otherwise specified—	
Cork .. .. .	G. (Meas. rate).
Corkboard .. .. .	G. (Meas. rate).
Iron or steel, as under—	
Angle, bar, channel, rod, hoop, sheet, tubular, or plate, also rolled steel sections, not prepared in any way, not otherwise specified .. .. .	D.
Angle, bar, channel, rod, hoop, sheet, tubular, or plate, manufactured, not otherwise specified .. .. .	C.
Tubular steel sections, assembled, as under—	
Scaffolding .. .. .	C plus 50%.
Trusses and columns .. .. .	C plus 50%.
Kerosene, in bulk, in owner's tank wagons, which must be loaded to the full carrying capacity .. .. . See regulation 89	
Lactalbumin (a dairy by-product) .. .. .	D.
Military equipment etc. After the words “motor cycles without sidecars” <i>Add:</i> radio and radar equipment.	
Oil, crude, diesel, or fuel *—	
In owner's tank wagons. Such tank wagons to be loaded to their full carrying capacity .. .. . See regulation 89	
Plastic bottles, flacons, and jars .. .. .	G. (Meas. rate).
Plywood .. .. .	C.
Printing metal .. .. .	D.
Racks, livestock, feeding, assembled .. .. .	G. (Meas. rate).
Racks, livestock, feeding, unassembled .. .. .	C.
Refrigerator parts and accessories, plastic .. .. .	G. (Meas. rate).
Rotary hoes, farm or garden, assembled—	
Not exceeding 2 cwt .. .. .	C plus 50%.
Exceeding 2 cwt but not exceeding 5 cwt— Charge as for 5 cwt per unit .. .. .	C.
Shower screens, stainless steel .. .. .	G. (Meas. rate).
Sprays, portable, sheep .. .. .	C plus 50%.
Tailing pens, collapsed .. .. .	C plus 50%.

GOODS, LIVESTOCK, PARCELS, AND LUGGAGE—*continued*68. Classification of Goods, Livestock, etc.—*continued*Paragraph 4—*continued**Insert—continued*

	Class
Tanks, beer or milk, stainless steel—	
Not exceeding 100 gallons capacity, as 4 cwt each .. .. .	C plus 50%.
Exceeding 100 gallons, but not exceeding 150 gallons capacity, as 7 cwt each .. .. .	C plus 50%.
Exceeding 150 gallons, but not exceeding 300 gallons capacity, as 12 cwt each .. .. .	C plus 50%.
Exceeding 300 gallons, but not exceeding 500 gallons capacity, as 15 cwt each .. .. .	C plus 50%.
Exceeding 500 gallons, but not exceeding 1,000 gallons capacity, as 1 ton each .. .. .	C plus 50%.
Exceeding 1,000 gallons capacity (minimum charge when loaded on a four-wheeled wagon, as for 30 cwt each) .. .. .	C plus 50%.
Type, metal .. .. .	D.
Vats, stainless steel .. .. . As "tanks, beer or milk, stainless steel."	
Wheelbarrows, steel, unassembled (two or more per consignment, trays to be nested) .. .. .	C.
Window frames, steel or bronze .. .. .	C.
Window frames, aluminium .. .. .	C plus 50%.
Wire, as under—	
Display stands .. .. .	C. Double rate.
Wool bins, movable, assembled, (minimum charge as for 1 ton per consignment) .. .. .	C.
Wool bins, movable, unassembled .. .. .	C.
Yomanite (sand and cement mixture) .. .. .	E plus 50%.

## 70. Computation of Charges

Paragraph 9:

*Omit:* Insulated VB wagons.*Insert:* Insulated VB or Vs wagons.

## 73. Class F

Paragraph 1:

*Omit:* Per RB  
or UB  
Wagon*Insert:* Per RB,  
UB, or UR  
Wagon

## 75. Class K

Paragraph 1 (two places):

*Omit:* Each  
RB or UB  
Bogie Wagon*Insert:* Each  
RB, UB, or UR  
Bogie WagonParagraph 2: *Omit* the first sentence, and *substitute* the following:

2. **Small Lots**—Except where otherwise specified, the charge for any quantity less than the wagon minimum prescribed will be based on such minimum or on the actual quantity (subject to a minimum of 100 superficial feet) at the following scale, whichever is cheaper:

*Omit* paragraphs 4 and 5, and *substitute*:

**Less Than Minimum Loads**—4. (a) Where a consignment of timber is loaded on a bogie wagon and the quantity is less than the prescribed minimum load for the class of wagon used, the charges will be based on such minimum or, if cheaper, on the actual quantity of timber at the small lots scale plus the charge for one check wagon.

(b) Where a consignment of timber loaded on a bogie wagon also requires a four-wheeled check wagon, charges will be based on the minimum loads for one bogie and one check wagon or, if cheaper, on the actual quantity at the small lots scale, plus the charge for two check wagons.

GOODS, LIVESTOCK, PARCELS, AND LUGGAGE—continued

75. Class K—continued

Paragraph 2—continued

5. Any deficiency in quantity required to make up the prescribed minimum referred to in paragraphs 2 or 4 is to be charged at Class K single rate.

Paragraph 16: Omit this paragraph, and substitute the following:

16. Tallying—When it is desired that the Department tally the number of pieces, 1s. per 100 superficial feet will be charged—minimum charge 2s. This charge will not apply to consignments of timber tallied by the Department when loading, unloading, or handling charges at ship's side or elsewhere are payable. The Department reserves the right to decline to undertake the tallying of timber.

79. Class Q

Paragraph 1:

<i>Omit:</i>	Per RB or UB Wagon
<i>Insert:</i>	Per RB, UB, or UR Wagon

83. Motor Vehicles

Paragraph 2, Charges—Omit the following from this paragraph:

*Two or more motor vehicles in one consignment loaded together in one four-wheeled wagon (for the purpose of this provision a bogie wagon will be treated as two four-wheeled wagons)	Full rate for first vehicle; half rate for each additional vehicle.
---	---

and substitute:

*Two or more motor vehicles in one consignment loaded together in one four-wheeled wagon	Full rate for first vehicle; half rate for each additional vehicle.
--	---

*Three or more cars in one consignment loaded on one bogie wagon	Full rate for the first vehicle; half rate for each additional vehicle (minimum charge as for two vehicles at full rate).
--	---

Paragraph 2:

<i>Omit:</i> One vehicle loaded on an RB or UB wagon owing to its length .. .. .	Double rate.
<i>Insert:</i> One vehicle loaded on an RB, UB, or UR wagon owing to its length .. .. .	Double rate.

88. Returned Empties

Paragraph 2:

Omit the wording "paragraphs 4 to 7 inclusive," and substitute "paragraphs 4 and 5".

Omit paragraph 6.

Omit "Regulation 89 reserved for future use.", and substitute the following new regulation:



GOODS, LIVESTOCK, PARCELS, AND LUGGAGE—*continued*

## 89. Petroleum Products in Owner's Tank Wagons

1. The charges for the conveyance of petroleum products in privately owned tank wagons will be as under:

Miles Not Exceeding	Benzine, Kerosene, and Similar Mineral Oils Weighing Less Than 8 lb per Gallon	Crude, Residual, or Fuel Oils Weighing 8 lb or More per Gallon	Miles Not Exceeding	Benzine, Kerosene, and Similar Mineral Oils Weighing Less Than 8 lb per Gallon	Crude, Residual, or Fuel Oils Weighing 8 lb or More per Gallon
	Rate per Ton	Rate per Ton		Rate per Ton	Rate per Ton
	£ s. d.	£ s. d.		£ s. d.	£ s. d.
5	0 9 1	0 9 1	100	3 13 8	3 3 9
6	0 10 9	0 10 9	105	3 15 0	3 5 4
7	0 11 5	0 11 5	110	3 16 3	3 6 9
8	0 12 6	0 12 6	115	3 17 9	3 8 3
9	0 13 3	0 13 3	120	3 18 10	3 9 10
10	0 14 4	0 14 3			
11	0 15 4	0 14 11	125	4 0 7	3 11 4
12	0 16 1	0 15 9	130	4 1 11	3 13 0
13	0 17 3	0 16 6	135	4 3 7	3 14 3
14	0 17 11	0 17 4	140	4 5 1	3 15 9
15	0 19 0	0 18 6	145	4 6 4	3 17 5
16	0 19 7	0 19 3	150	4 7 11	3 19 0
17	1 0 9	1 0 2	155	4 10 11	4 1 10
18	1 1 5	1 0 11	160	4 13 6	4 4 4
19	1 2 6	1 1 7	165	4 16 2	4 6 9
20	1 3 8	1 2 5	170	4 18 9	4 9 3
22	1 4 7	1 3 6	175	5 1 4	4 11 8
24	1 6 5	1 5 1	180	5 3 10	4 14 1
26	1 8 2	1 6 8	185	5 6 5	4 16 7
28	1 10 0	1 8 5	190	5 7 3	4 18 0
30	1 11 10	1 9 10	195	5 8 6	4 19 3
32	1 13 2	1 11 0	200	5 9 3	5 0 2
34	1 15 0	1 12 2	210	5 10 11	5 2 0
36	1 16 10	1 13 6	220	5 12 11	5 4 6
38	1 18 8	1 14 10	230	5 15 3	5 7 0
40	2 0 5	1 16 0	240	5 17 9	5 9 0
42	2 2 3	1 17 2	250	5 19 1	5 11 3
44	2 4 2	1 18 6	260	6 1 4	5 13 6
46	2 6 8	1 19 10	270	6 3 8	5 15 9
48	2 8 5	2 0 9	280	6 5 5	5 18 0
50	2 10 2	2 2 3	290	6 7 9	6 0 3
52	2 12 1	2 3 2	300	6 9 7	6 2 6
54	2 14 0	2 4 6	310	6 11 10	6 5 0
56	2 15 4	2 5 11	320	6 14 1	6 7 0
58	2 16 5	2 7 1	330	6 15 11	6 9 6
60	2 17 10	2 8 4	340	6 18 2	6 11 9
62	2 18 8	2 9 6	350	7 0 0	6 14 0
64	2 19 8	2 10 8	360	7 2 3	6 16 3
66	3 0 11	2 11 9	370	7 4 1	6 18 6
68	3 1 10	2 13 1	380	7 6 4	7 1 0
70	3 3 2	2 14 4	390	7 8 4	7 3 3
75	3 4 8	2 15 2	400	7 10 5	7 5 6
80	3 6 5	2 17 4	410	7 12 5	7 7 9
85	3 8 4	2 19 5	420	7 14 8	7 10 0
90	3 10 0	3 0 10	435	7 17 1	7 13 0
95	3 12 0	3 2 5	450	8 0 1	7 16 0

For each additional 15 miles or fraction thereof  
beyond 450 miles will be added:  
3 3 3 0

GOODS, LIVESTOCK, PARCELS, AND LUGGAGE—*continued***89. Petroleum Products in Owner's Tank Wagons—*continued***

2. All tank wagons are to be loaded to their full carrying capacity.

3. **Privately Owned Empty Tank Wagons** which on the outward journey have been used for the conveyance of benzine, kerosene, or similar mineral oils, and fuel oil, will, when being returned from the original consignee and the original receiving station to the original consignor and the original forwarding station, be hauled free. Where the empty tank wagon is not returned to the original forwarding station, but is forwarded to another station for filling, and where the mileage, when the empty tank is railed, is in excess of that for which it is entitled to free return, the excess mileage will be charged at the rate of 4s. per mile. Where such tank wagons are sent to Railway Workshops for repairs, no charge will be made for railage or haulage.

**90. Lime for Manuring Farm Lands**

Paragraph 2:

*Omit:* Per RB or UB  
Wagon  
*Insert:* Per RB, UB, or  
UR Wagon

**92. Exhibits Forwarded to and from Shows, etc.**

Paragraph 4—*Add* the following new sentence:

Any terminal charges applicable to the outward and homeward journey are to be collected on the outward journey.

**95. Circuses**

*Insert* "UR" after "UB" in two places.

**96. Haulage, Handling, Sorting, and Transhipment Charges—Port Stations**

Paragraph 1: *Omit* the footnote from this paragraph and the asterisk opposite "Timber".

Paragraph 5 (c):

*Omit:* Goods for which W, WA, FV, V, or VB wagons are ordered, per ton.

*Insert:* Goods for which W, WA, FV, V, VB, or Vs wagons are ordered, per ton.

**102. Storage**

Paragraph 1, **Free Allowance:** *Omit* the last sentence from this paragraph, and *substitute* the following:

Working hours shall be deemed to be from 8 a.m. to 5 p.m. The following days will be treated as *dies non*:

Saturdays  
Sundays  
2 January

Other days on which goods sheds are closed, including Anniversary Day, or the day observed in lieu thereof, in each province.

**103. Demurrage**

Paragraph 6, **Working Hours:** *Omit* this paragraph, and *substitute* the following:

6. **Working Hours**—For the purpose of calculating demurrage charges, working hours shall be deemed to be from 8 a.m. to 5 p.m. The following days will be treated as *dies non*:

Saturdays  
Sundays  
2 January

Other days on which goods sheds are closed, including Anniversary Day, or the day observed in lieu thereof, in each province.

**106. Check and Empty Railway Wagons: Bogie and Special Wagons**

Paragraph 3: *Omit*, the words "Regulation 88, Paragraph 6", and *substitute* "Regulation 89, Paragraph 3".

**110. "Owner's Risk" Goods: Insurance of Goods**

Paragraph 1: After the words "consigned to" in the seventeenth line *add* the words "or from".

## WHARVES

## 135. Picton Wharves

Paragraph 1, Rates: *Omit* this paragraph, and *substitute* the following:

## 135. Picton Wharves

1. Rates—The following wharfage rates will be charged on goods passing over the wharves:

	£	s.	d.
Minimum charge per consignment .. .. .	0	0	9
Goods not otherwise specified, per ton weight or measurement, at the option of the Department .. .. .	0	5	0
Benzine and similar mineral oils, in bulk, per ton of 250 gallons .. .. .	0	5	0
Bicycles, each .. .. .	0	2	0
Boats, motor or sailing—			
Exceeding 1 ton, each .. .. .	2	0	0
Exceeding 3 cwt and not exceeding 1 ton .. .. .	1	0	0
Not exceeding 3 cwt .. .. .	0	10	0
Unloaded into harbour or loaded direct from harbour into ships and not passing over wharves .. .. .			Half rates
Cattle—			
For the first head .. .. .	0	5	9
Each additional, per head .. .. .	0	1	3
Class E goods railed to Picton for shipment .. .. .	0	3	0
Coal, per ton .. .. .	0	2	7
Corpses, each .. .. .	0	13	9
Dogs, each .. .. .	0	2	0
Empties, per ton measurement .. .. .	0	2	6
Flax, hemp, or tow, per bale .. .. .	0	0	9
Horses—			
For the first head .. .. .	0	5	9
Each additional, per head .. .. .	0	3	3
Motorcars (except service cars), set up, each .. .. .	0	11	0
Motorcar trailers, each .. .. .	0	9	0
Motor caravans other than trailers (self-contained units), each .. .. .	1	0	0
Motor cycles—			
Not otherwise specified, each .. .. .	0	7	3
Delivered to or received from persons on the wharf .. .. .	0	3	0
With sidecar, each .. .. .	0	10	0
Motor vehicles (except caravans) bearing "L" plates each .. .. .	0	11	0
Motor vehicles, set up, not otherwise specified, each .. .. .	1	0	0
Passengers' luggage carried in hand .. .. .			Free
Pigeons, homing per ton .. .. .	0	2	7
Sheep or pigs—			
For the first 50, each .. .. .	0	0	8
Each additional, per head .. .. .	0	0	4
Sulkies, trotting, each .. .. .	0	4	0
Timber, per 100 superficial feet .. .. .	0	0	9
Vehicles, not otherwise specified—			
Four-wheeled, each .. .. .	1	0	0
Two-wheeled, each .. .. .	0	9	0
Wool and sheep-skins, not exceeding 4 cwt, per bale .. .. .	0	0	8

All goods and livestock that do not pass over the wharves but are landed on or shipped from or pass over railway lands adjacent to the wharves, and goods and livestock loaded or unloaded from or into lighters into or from ships lying at or adjacent to any wharf or within the limits of the railway lands, except as specially provided, will be charged half the ordinary wharfage rates.

Goods and produce from and to settlers residing in the Queen Charlotte or Pelorus Sounds landed or shipped at the Department's wharves set apart for traffic to and from the Sounds will be exempt from wharfage charges.

## 136. LAKE WAKATIPU STEAMER SERVICE

Paragraph 5: *Omit* the following:

## SCHEDULE OF FARES

Between	And	Ordinary	
		Single	Return
Glenorchy .. .. .	Kinloch .. .. .	s. d. 2 3	s. d. 4 6
<i>and substitute:</i>			
Glenorchy .. .. .	Kinloch .. .. .	1 9	3 6

## LOCAL RATES

## NORTH ISLAND MAIN LINE AND BRANCHES

## 1. Butter and Cheese

From	To	Rate
<i>Omit:</i>		
Moerewa .. .. .	Auckland or Southdown ..	£3 2s. 10d., <i>b</i> , per ton.
Okaihau .. .. .	.. .. .	£3 18s. 11d., <i>a, b, d</i> , per ton.
Kaikohe .. .. .	.. .. .	£4 0s. 6d., <i>a, b</i> , per ton.
Hikurangi .. .. .	.. .. .	£3 3s. 7d., <i>b</i> , per ton.
Waharoa .. .. .	.. .. .	£3 11s. 7d., <i>c</i> , per ton.
Paeroa .. .. .	.. .. .	£1 18s. 9d., <i>b</i> , per ton.
Taranaki Producers' Freezing Works Co. Ltd.'s private siding at Moturoa	New Plymouth Breakwater	11s. 6d. per ton in insulated wagons, 10s. 6d. per ton in other types of wagons. Charges include handling at ship's side. Minimum charge as for 5 tons per four-wheeled wagon and 10 tons per bogie wagon.
Midhirst .. .. .	Moturoa .. .. .	19s., <i>b</i> , per ton. Smaller quantities to be charged 19s. 6d. per ton.
<i>Insert:</i>		
Waharoa .. .. .	Auckland, Mt. Eden, or Southdown	£3 11s. 7d., <i>c</i> , per ton.
Paeroa .. .. .	.. .. .	£1 18s. 9d., <i>b</i> , per ton.
Taranaki Producers' Freezing Works Co. Ltd.'s private siding at Moturoa	New Plymouth Breakwater	Butter 11s. 6d. per ton, cheese 10s. 6d. per ton. Charges include handling at ship's side. Minimum charge as for 5 tons per four-wheeled wagon and 10 tons per bogie wagon.
Okoia .. .. .	Wellington .. .. .	£4 1s. 7d., <i>b</i> , per ton.
Turakina .. .. .	.. .. .	£3 16s. 10d., <i>b</i> , per ton.

*Omit:* Footnote "i", and *substitute:**i* Includes collection from the Stratford Dairy Co's factory.

NORTH ISLAND MAIN LINE AND BRANCHES—*continued*

## 2. Benzine, Kerosene, etc., in Owner's Tank Wagons

Omit this regulation, and substitute the following:

## 2. Benzine, Kerosene, etc., in Owner's Tank Wagons

The charges for the conveyance of benzine, kerosene, and similar mineral oils, also crude, residual, or fuel oils in owner's tank wagons are:

From	To	Benzine, Kerosene, and Similar Mineral Oils. Rate per Ton	*Crude, Residual, or Fuel Oils. Rate per Ton
		£ s. d.	£ s. d.
Auckland	Okaihau .. .. .	5 1 8	.. .. .
	Kaikohe .. .. .	4 19 8	4 18 0
	Whangarei .. .. .	3 12 1	3 12 1
	Pukekohe .. .. .	1 0 9	1 0 9
	Frankton .. .. .	2 7 9	2 7 9
	Kinleith .. .. .	.. .. .	4 4 4
	Koutu .. .. .	4 13 1	4 9 3
	Rotorua .. .. .	4 15 7	4 11 8
	Tirohia .. .. .	1 15 0	1 15 0
	Paeroa .. .. .	1 15 0	1 15 0
	Te Puna .. .. .	4 13 2	.. .. .
	Tauranga .. .. .	4 15 8	4 14 1
	Te Puke .. .. .	5 2 4	.. .. .
	Kawerau .. .. .	.. .. .	5 9 0
	Awakeri .. .. .	5 9 3	5 7 0
Whangarei	Taneatua .. .. .	5 11 3	5 9 0
	Te Kuiti .. .. .	3 16 8	3 12 5
	Taumarunui .. .. .	4 15 7	4 11 8
	Kaikohe .. .. .	1 15 0	1 15 0
	Okaihau .. .. .	1 15 0	1 15 0
Mt. Maunganui	Frankton .. .. .	2 7 9	2 7 9
	Paeroa .. .. .	1 15 0	1 15 0
	Awakeri .. .. .	1 15 0	1 15 0
Oil company's private sidings at Mt. Maunganui	Taneatua .. .. .	1 15 0	1 15 0
	Kinleith .. .. .	1 15 0	1 15 0
	Tauranga .. .. .	0 12 0	.. .. .
	Taumarunui .. .. .	3 17 3	3 12 9
	Manunui .. .. .	4 3 7	3 14 3
Moturoa	Hawera .. .. .	2 2 7	.. .. .
	Wanganui .. .. .	3 12 2	3 6 9
	Private sidings on the Castlecliff Branch	3 12 2	3 6 9
	Taihape .. .. .	4 10 8	4 6 9
	New Plymouth .. .. .	5 13 11	5 12 9
Wellington	Hawera .. .. .	5 4 1	.. .. .
	Wanganui .. .. .	4 3 4	3 19 0
	Private sidings on the Castlecliff Branch	4 3 4	3 19 0
	Terrace End .. .. .	2 16 2	2 16 2
	Levin .. .. .	1 17 0	.. .. .
	Masterton .. .. .	2 4 0	2 4 0
	Tahoraiti .. .. .	3 14 11	.. .. .
Oil companies' private sidings near Woburn	Hastings .. .. .	5 1 0	.. .. .
	Oil companies' private sidings near Ahuriri	5 5 1	5 2 0
	Kumeu .. .. .	8 3 3	.. .. .
	Taihape .. .. .	4 15 7	.. .. .
	New Plymouth .. .. .	5 15 8	5 14 11
	Stratford .. .. .	5 9 11	.. .. .
	Hawera .. .. .	5 5 11	.. .. .
Wanganui .. .. .	4 5 10	4 2 3	

NORTH ISLAND MAIN LINE AND BRANCHES—continued  
2. Benzine, Kerosene, etc., in Owner's Tank Wagons—continued

From	To	Benzine, Kerosene, and Similar Mineral Oils. Rate per Ton	*Crude, Residual, or Fuel Oils. Rate per Ton
		£ s. d.	£ s. d.
Oil companies' private sidings near Woburn	Private sidings on the Castlecliff Branch ..	4 5 10	4 2 3
	Terrace End ..	2 19 8	2 19 8
	Palmerston North ..	..	2 19 8
	Levin ..	2 3 0	..
	Masterton ..	2 2 0	2 2 0
	Tahoraiti ..	3 16 8	..
	Waipukurau ..	4 10 8	..
	Hastings ..	4 12 6	4 12 6
	Oil companies' private sidings near Ahuriri ..	5 6 0	5 2 0
	Wairoa ..	5 11 8	5 11 8
Oil companies' private sidings near Ahuriri	Gisborne ..	6 18 2	6 11 9
	Wellington ..	..	0 14 11
	Waipukurau ..	1 13 5	1 13 5
	Tahoraiti ..	3 5 6	2 19 5
	Wairoa ..	3 2 5	2 12 6
	Gisborne ..	3 7 5	2 12 6

\* Oils having a specific gravity of 8 lb or more per gallon. (Fuel or crude oils having a specific gravity of less than 8 lb per gallon will be charged as kerosene.)

6. Miscellaneous

From	To	Description of Goods	Rate
<i>Omit:</i>			
Auckland, Mount Eden, or Remuera	Stations in the North Island, except Wellington, or Messrs N.Z. Wallboards Ltd.'s private siding near Woburn	Plaster, direct ex factory, in minimum wagon loads as per reg. 77, General Scale of Charges	Class N, including the cost of tarpaulins.
	Wellington ..	Plaster, direct ex factory	£5 1s. 6d. per ton, including the cost of tarpaulins. Minimum quantities: Class of Wagon Tons L (8 ton) 8 L (10 ton) 10 LA 10 LC 12½ M 6 Mc 8 Owners to load and unload.
	Messrs N.Z. Wallboards Ltd.'s private siding near Woburn	Plaster, direct ex factory	£5 6s. 8d. per ton, including the cost of tarpaulins. Minimum quantities:

Quantities in less than prescribed minimum wagon loads will be charged at such minimum or on actual weight at Class D, whichever is cheaper. Minimum quantity, 2,000 tons per annum.

NORTH ISLAND MAIN LINE AND BRANCHES—continued

6. Miscellaneous—continued

From	To	Description of Goods	Rate
<i>Omit</i> —continued			Class of Wagon    Tons
Auckland, Mount Eden, or Remu- era			L (8 ton)    8
			L (10 ton)   10
			LA            10
			Lc            12½
			M             6
			Mc            8
Auckland, Ellerslie, or Penrose	New Plymouth, Wanganui, or Wellington	Fruit, vegetables, spa- ghetti, soups, sauces, cat and dog foods, canned; also bottled sauces, direct ex factory	£6 7s. 6d. per ton.
Auckland or New- market	Wellington ..	Beer or stout, bottled ..	£6 14s. 9d. per ton. Minimum quantity, 8 tons 15 cwt per LA wagon, and full wagon loading for other types of wagons. Lesser quantities will be charged on actual weight at £7 2s. 6d. per ton, if cheaper. Minimum quan- tity, 10 cwt per consig- ment.
Auckland ..	Wellington ..	Honey, in bulk, packed, direct from blending store	£4 19s. 6d. per ton. Minimum quantity, 10 cwt per con- signment.
		Honey in cartons, packed, direct from blending store	£6 4s. 3d. per ton. Minimum quantity, 10 cwt per con- signment.
		Vinegar, bottled, packed, or in bulk, direct from factory	£6 17s. per ton. Minimum quantity, 10 cwt per con- signment.
Auckland, Ellerslie, or Penrose	Hastings or Napier	Fruit, vegetables, spa- ghetti, soups, sauces, cat and dog foods, can- ned, also bottled sauces, direct ex factory	£7 3s. per ton.
Penrose ..	Wellington ..	Asbestos-cement ("Fi- brolite") products as under— Sheets, corrugated or plain, and builders' requisites including ventilators, sky- lights, downpipe, guttering, etc.	£6 2s. 8d. per ton. For sheets, or sheets and builders' requisites loaded together in the same wagon, a minimum load of 6 tons per four-wheeled wagon, n.o.s., and 7 tons 15 cwt per Lc wagon will apply. Otherwise the minimum wagon loads as per reg. 77, General Scale of Charges will apply. Owners to load and unload.
		Waterpipes Roofing slates	
Onehunga ..	Any station in the North Island	Impregnated sawn timber (previously conveyed as sawn timber by rail direct to the treatment plant at Onehunga for distances of not less than 45 miles)	Class K less 20 per cent.

NORTH ISLAND MAIN LINE AND BRANCHES—continued  
6. Miscellaneous—continued

From	To	Description of Goods	Rate
<i>Omit—</i> continued			
Otahuhu ..	Wellington ..	Beer or stout, bottled, packed	£6 14s. 9d. per ton. Minimum load, 8 tons 15 cwt per LA wagon and full loading for other types of wagons. Lesser quantities will be charged on actual weight at £7 2s. 6d. per ton, if cheaper. Minimum quantity 10 cwt per consignment.
Pukekohe ..	Wellington, New Plymouth, or Wanganui	Beer, in bulk, and beer gas in cylinders	
Frankton ..	Wellington ..	Fruit, vegetables, spaghetti, soups, sauces, cat and dog foods, canned, also bottled sauces, direct ex factory	£6 12s. 6d. per ton.
Waharoa ..	Wellington ..	Beer or stout, bottled ..	£6 14s. 9d. per ton. Minimum quantity, 8 tons 15 cwt per LA wagon, and full loading for other types of wagons.
Waharoa ..	Auckland or Mount Eden	Skim-milk powder ..	£2 12s. 2d. per ton. Minimum quantity, 9 tons per LA wagon, 11 tons per LC wagon, and full loading for other types of wagons. Owners to load and unload.
Waharoa ..	Tamaki ..	Skim-milk powder ..	
Waharoa ..	Sylvia Park ..	Skim-milk powder ..	£2 12s. 9d. per ton. Minimum quantity, 9 tons per LA wagon, 11 tons per LC wagon, and full loading for other types of wagons. Owners to load and unload.
Kinleith ..	Penrose ..	Pinus chips for manufacture of wood pulp	
Marton ..	Any station in the North Island	Impregnated sawn timber (previously railed direct to the treatment plant at Marton for distances of not less than 45 miles)	£1 11s. per ton. Minimum quantities: Class of Wagon                      Tons L .. .. 7½ LA .. .. 9 LC .. .. 12 R .. .. 15 RB .. .. 21 Class K less 20 per cent.



NORTH ISLAND MAIN LINE AND BRANCHES—*continued*

6. Miscellaneous—*continued*

From	To	Description of Goods	Rate
<i>Omit—continued</i>			
Midhirst ..	Breakwater ..	Casein, dried. Consigned for shipment by overseas vessels at Breakwater	£1 9s. 9d. per ton. Minimum quantity per LA wagon, 9 tons, full loading for other types of wagons. Owners to load.
Wanganui ..	Waverley ..	Impregnated sawn timber (previously conveyed as sawn timber by rail from Waverley to Wanganui)	Class K less 20 per cent.
Carterton ..	Wellington ..	Impregnated sawn timber (previously conveyed as sawn timber by rail direct to the treatment plant at Carterton from Tokoroa, Edgcombe, or Ongarue)	Class K less 20 per cent.
Mangatainoka ..	Auckland or Newmarket	Beer, bottled .. ..	£6 14s. 9d. per ton. Minimum load, 8 tons 15 cwt per LA wagon and full loading for other types of wagons.
	Frankton .. ..	Beer, bottled .. ..	£6 1s. per ton. Minimum load, 8 tons 15 cwt per LA wagon and full loading for other types of wagons.
Hastings of Napier	Auckland or Newmarket	Fruit and vegetables, soups, foods, and jams, canned, and sauces, bottled, direct ex factory	£7 3s. per ton.
Hastings or Napier	Wellington ..	Fruit and vegetables, soups, foods, and jams, canned, and sauces, bottled, direct ex factory	Class D.
Napier ..	Any station in the North Island	Impregnated sawn timber (previously conveyed as sawn timber by rail direct to the treatment plant at Napier from Kotemaori)	Class K less 1s., per 100 super ft.
Gisborne ..	Auckland ..	Foodstuffs and sauces, canned, direct ex factory. Owner's risk	£6 14s. 6d. per ton. Owners to load and unload.
<i>Insert:</i>	Stations in the North Island, not otherwise specified	Plaster, direct ex factory, in minimum wagon loads as per reg. 77, General Scale of Charges	Class N, including the use of tarpaulins, but excluding the cost of sheeting.
Auckland, Mount Eden, or Remuera	Wellington ..	Plaster, direct ex factory	£5 3s. 6d. per ton, including the use of tarpaulins, but excluding the cost of sheeting. Minimum quantities: Class of Wagon    Tons L (8 ton)    8

## NORTH ISLAND MAIN LINE AND BRANCHES—continued

## 6. Miscellaneous—continued

From	To	Description of Goods	Rate
<i>Insert—continued</i>			
Auckland, Mount Eden, or Remuera	Messrs N.Z. Wall-boards Ltd.'s private siding near Woburn	Plaster, direct ex factory	L (10 tons) 10 LA 10 Lc 12½ M 6 MC 8 Owners to load and unload. £5 9s. per ton, including the use of tarpaulins, but excluding the cost of sheeting. Minimum quantities: Class of Wagon Tons L (8 ton) 8 L (10 ton) 10 LA 10 Lc 12½ M 6 MC 8 Owners to load and unload.
	Porirua, Tawa Flat, Johnsonville, Petone, Lower Hutt, Naenae, Trentham and Upper Hutt	Plaster, direct ex factory	£6 per ton, including the use of tarpaulins, but excluding the cost of sheeting. Minimum quantities: as per reg. 77, General Scale of Charges. Owners to load and unload.
Auckland, Ellerslie, or Penrose	New Plymouth or Wanganui	Fruit, vegetables, spaghetti, soups, sauces, cat and dog foods, canned; also bottled sauces, direct ex factory	£6 7s. 6d. per ton.
Auckland, Ellerslie, or Penrose	Wellington ..	Fruit, vegetables, spaghetti, soups, sauces, cat and dog foods, canned; also bottled sauces, direct ex factory	£6 10s. per ton.
Auckland or Newmarket	Wellington ..	Beer or stout, bottled ..	£6 17s. 3d. per ton. Minimum quantity, 8 tons 15 cwt per LA wagon, and full wagon loading for other types of wagons. Lesser quantities will be charged on actual weight at £7 5s. per ton, if cheaper. Minimum quantity, 10 cwt per consignment.
		Honey, in bulk, packed, direct from blending store	£5 5s. per ton. Minimum quantity, 10 cwt per consignment.

Quantities in less than prescribed minimum wagon loads will be charged at such minimum or on actual weight at Class D, whichever is cheaper.

NORTH ISLAND MAIN LINE AND BRANCHES—*continued*  
6. Miscellaneous—*continued*

From	To	Description of Goods	Rate
<i>Insert—continued</i>			
Auckland ..	Wellington ..	Honey in cartons, packed, direct from blending store	£6 10s. per ton. Minimum quantity, 10 cwt per consignment.
Auckland, Ellerslie, or Penrose	Hastings or Napier	Vinegar, bottled, packed, or in bulk, direct from factory	£7 per ton. Minimum quantity, 10 cwt per consignment.
		Fruit, vegetables, spaghetti, soups, sauces, Chesdale cheese, cat and dog foods, canned, also bottled sauces, direct ex factory	£7 3s. per ton.
Otahuhu ..	Wellington	Beer or stout, bottled, packed	£6 17s. 3d. per ton. Minimum load, 8 tons 15 cwt per LA wagon and full loading for other types of wagons. Lesser quantities will be charged on actual weight at £7 5s. per ton, if cheaper. Minimum quantity 10 cwt per consignment.
Pukekohe ..	New Plymouth or Wanganui	Beer, in bulk, and beer gas in cylinders	£7 8s. 3d. per ton. Minimum quantity, 10 cwt per consignment.
		Fruit, vegetables, spaghetti, soups, sauces, cat and dog foods, canned, also bottled sauces, direct ex factory	£6 12s. 6d. per ton.
Pukekohe ..	Wellington ..	Fruit, vegetables, spaghetti, soups, sauces, cat and dog foods, canned, also bottled sauces, direct ex factory	£6 15s. per ton.
Frankton ..	Wellington ..	Beer or stout, bottled ..	£6 17s. 3d. per ton. Minimum quantity, 8 tons 15 cwt per LA wagon, and full loading for other types of wagons.
Waharoa ..	Auckland or Mt. Eden	Skim-milk powder ..	£2 12s. 2d. per ton. Minimum quantity, 8 tons per LA wagon, 10 tons 10 cwt per LC wagon, and full loading for other types of wagons. Owners to load and unload.
	Tamaki ..	Skim-milk powder ..	£2 12s. 2d. per ton. Minimum quantity, 8 tons per LA wagon, 10 tons 10 cwt per LC wagon, and full loading for other types of wagons. Owners to load and unload.
Waharoa ..	Sylvia Park ..	Skim-milk powder ..	£2 12s. 9d. per ton. Minimum quantity, 8 tons per LA wagon, 10 tons 10 cwt per LC wagon, and full loading for other types of wagons. Owners to load and unload.

## NORTH ISLAND MAIN LINE AND BRANCHES—continued

## 6. Miscellaneous—continued

From	To	Description of Goods	Rate
<i>Insert—continued</i>			
Kinleith ..	Penrose ..	Pinus chips and slabs for the manufacture of wood pulp	£1 11s. per ton. Minimum quantities— Class of Wagon                      Tons L .. .. 7½ LA .. .. 9 LC .. .. 12 R .. .. 15 RB .. .. 21
Waverley ..	Bunnythorpe or Palmerston North	Shooks .. ..	D less 25%. Minimum quantities— Class of Wagon                      Tons L .. .. 4 LA .. .. 6 LC .. .. 7½ Owners to load and unload. £7 3s. per ton.
Hastings, Napier, or Ahuriri	Auckland or Penrose	Fruit and vegetables, soups, foods, and jams, canned, and sauces, bottled, direct ex factory.	Class D.
Hastings, Napier, or Ahuriri	Wellington ..	Fruit and vegetables, soups, foods, and jams, canned, and sauces, bottled, direct ex factory	Class D.
Gisborne ..	Auckland or Penrose	Foodstuffs and sauces canned, direct ex factory. Owner's risk	£6 14s. 6d. per ton. Owners to load and unload.

## 10. Haulage and Storage Charges, New Plymouth - Breakwater Line

Paragraph 2:

*Add* to the fourth line, after railage, "from Breakwater".

## 11. Castlecliff Branch

*Add* the following new paragraph:

Consignments in wagon lots (subject to a minimum of 30 cwt as for a private siding) will be accepted for transit to and from the public siding at Castlecliff. Freight charges will be computed on Wanganui milage, plus 4 miles.

## 15. Through Booking Between Wellington and Stations Elevation-Blenheim Inclusive

*Omit* this regulation, and *substitute* the following:

## 15. Through Booking Between Wellington and Stations Elevation-Blenheim Inclusive

1. Parcels and goods traffic through booked between Wellington and stations Elevation-Blenheim inclusive will be charged at the through rates shown in para. 7 hereof, which include conveyance by rail and steamer; cartage, wharfage, and harbour-improvement rates at Wellington; wharfage and handling at Picton; also sorting at Blenheim and the use of tarpaulins.

2. On parcels traffic consigned to Wellington, the terminal charge as prescribed in reg. 55, General Scale of Charges, will be additional.

3. In the case of consignments from or to north of Wellington or south of Blenheim, railage charges (also the cost of handling to or from railway wagons at Wellington and/or Blenheim on Classes E, F, H, K, N, P, Q, and R goods) will be additional.

4. Traffic through booked between Wellington and Picton Station will be charged in accordance with the "General Instructions for Through Booking".

NORTH ISLAND MAIN LINE AND BRANCHES—*continued*15. Through Booking between Wellington and Stations Elevation-Blenheim Inclusive—*continued*

5. The rebate at Wellington on Government cargo as provided in the "General Instructions for Through Booking" will apply on consignments exceeding 5 cwt or 10 cubic feet. A reduction on account of wharfage at Picton is not applicable under this through booking arrangement.

6. When cargo is not carted by the Department between the wharves and railway station at Wellington, the through rate will be reduced by the following amounts:

Outward cargo .. .. .	6s. 6d. per ton
Inward cargo .. .. .	2s. 6d. per ton

The reduction specified above for inward cargo is to be automatically applied in respect of goods conveyed to Wellington for local delivery.

Class of Goods	Per Ton of or Charge as Indicated	Rate
<i>General Cargo</i>		
*General cargo not otherwise specified—		£ s. d.
Wellington-Blenheim .. .. .	40 cubic feet or 20 cwt (whichever greater)	4 16 0
Blenheim-Wellington .. .. .		4 18 6
*General cargo in cartons, paper parcels, or packages under 1 cubic foot—		
Wellington-Blenheim .. .. .	40 cubic feet or 20 cwt (whichever greater)	4 18 0
Blenheim-Wellington .. .. .		5 3 0
Small lots of general cargo—		
Not Exceeding Cwt.      Not Exceeding Cubic Feet		
½      or      1 .. .. .	.. .. .	0 3 0
1      or      2 .. .. .	.. .. .	0 5 0
1½      or      3 .. .. .	.. .. .	0 7 6
2      or      4 .. .. .	.. .. .	0 10 0
2½      or      5 .. .. .	.. .. .	0 12 6
3      or      6 .. .. .	.. .. .	0 15 0
3½      or      7 .. .. .	.. .. .	0 17 6
4      or      8 .. .. .	.. .. .	1 0 0
4½      or      9 .. .. .	.. .. .	1 2 6
5      or      10 .. .. .	.. .. .	1 5 3
(Charges to be computed at these rates on weight or measurement, whichever is greater. Weights or measurements of all packages in each consignment are to be grouped for the purpose of charging.)		
*Asbestos-cement products—		
Wellington-Blenheim .. .. .	40 cubic feet or 20 cwt (whichever greater)	4 18 0
Blenheim-Wellington .. .. .		5 3 0
*Baths and basins, earthenware, porcelain, and cast iron—		
Wellington-Blenheim .. .. .	40 cubic feet or 20 cwt (whichever greater)	4 18 0
Blenheim-Wellington .. .. .		5 3 0
Bicycles, assembled, uncrated	Each .. .. .	1 10 6
*Cinematograph safety films (certified non- inflammable)	40 cubic feet or 20 cwt (whichever greater)	At the rate for general cargo, n.o.s.
*Coke, in sacks .. .. .	20 cwt .. .. .	5 14 0
Crayfish .. .. .	Sack .. .. .	0 11 0
†Dogs .. .. .	.. .. .	.. .. .
*Eggs, in crates .. .. .	40 cubic feet .. .. .	5 3 0
Furniture, in transports .. .. .	.. .. .	Special quotation.
*Glassware, in cases or crates—		
Wellington-Blenheim .. .. .	40 cubic feet .. .. .	4 18 0
Blenheim-Wellington .. .. .	40 cubic feet .. .. .	5 3 0

\* Minimum charge—

For consignments up to 5 cwt or 10 cubic feet .. .. . As for small lots of general cargo.

For consignments exceeding 5 cwt or 10 cubic feet .. .. . £1 5s. 3d.

† Dogs on chains or in boxes will be charged at the appropriate rail rates to or from Picton plus charges between Wellington and Picton as shown in the "General Instructions for Through Booking".

## NORTH ISLAND MAIN LINE AND BRANCHES—continued

## 15. Through Booking Between Wellington and Stations Elevation-Blenheim Inclusive—continued

Class of Goods	Per Ton of or Charge as Indicated	Rate
<i>General Cargo—continued</i>		£ s. d.
*Insulators, earthenware and porcelain—		
Wellington-Blenheim .. .. .	} 40 cubic feet or 20 cwt (whichever greater)	{ 4 18 0 5 3 0
Blenheim-Wellington .. .. .		
Lime .. .. .		Special quotation.
*Machinery, not fully cased—		
Wellington-Blenheim .. .. .	} 40 cubic feet or 20 cwt (whichever greater)	{ 4 18 0 5 3 0
Blenheim-Wellington .. .. .		
*Lucerne pellets .. .. .	20 cwt .. .. .	At the rate of general cargo, n.o.s.
Manures .. .. .		Special quotation.
Meat, frozen and fresh .. .. .		Special quotation.
*Metal, scrap, packed in tins, sacks, or cases .. .. .	20 cwt .. .. .	5 6 6
Motor tractors weighing up to 50 cwt .. .. .	40 cubic feet .. .. .	†
*Newspapers and periodicals—		
Wellington-Blenheim .. .. .	} 40 cubic feet or 20 cwt (whichever greater)	{ 4 18 0 5 3 0
Blenheim-Wellington .. .. .		
*Newsprint—		
Wellington-Blenheim .. .. .	20 cwt .. .. .	5 8 6
Oysters, in sacks .. .. .	Sack .. .. .	Special quotation.
Packages exceeding 20 cwt each .. .. .		Special quotation.
Pigeons, homing, in crates or baskets .. .. .	40 cubic feet .. .. .	4 13 6
*Plants, loose or in bundles—		
Wellington-Blenheim .. .. .	} 40 cubic feet or 20 cwt (whichever greater)	{ 4 18 0 5 3 0
Blenheim-Wellington .. .. .		
Plate glass, Wellington-Blenheim—		
Packages up to 40 cubic feet .. .. .	40 cubic feet .. .. .	6 2 0
Packages over 40 cubic feet and up to 80 cubic feet .. .. .	40 cubic feet .. .. .	7 7 0
Packages over 80 cubic feet .. .. .	40 cubic feet .. .. .	8 15 0
Posts, fencing, wooden, and strainers .. .. .		Special quotation.
*Poultry, live, in crates—		
Wellington-Blenheim .. .. .	40 cubic feet .. .. .	5 1 6
Blenheim-Wellington .. .. .	40 cubic feet .. .. .	5 6 6
Rails .. .. .		Special quotation.
*Radiators .. .. .		
*Radio sets and parts .. .. .		
*Ranges .. .. .		
*Refrigerators .. .. .		
Wellington-Blenheim .. .. .	40 cubic feet .. .. .	4 18 0
Blenheim-Wellington .. .. .	40 cubic feet .. .. .	5 3 0
*Salt, in bags .. .. .	20 cwt .. .. .	4 12 0
Sewing machines, treadle .. .. .	Each .. .. .	1 12 0
Sewing machines, portable .. .. .	Each .. .. .	0 8 9
*Sugar .. .. .	20 cwt .. .. .	4 17 0
Tanks, empty .. .. .		Special quotation.
Tar and other road-sealing preparations .. .. .		Special quotation.
*Trees—		
Wellington-Blenheim .. .. .	} 40 cubic feet or 20 cwt (whichever greater)	{ 4 18 0 5 3 0
Blenheim-Wellington .. .. .		

\* Minimum charge—

For consignments up to 5 cwt or 10 cubic feet .. As for small lots of general cargo.  
 For consignments exceeding 5 cwt or 10 cubic feet .. £1 5s. 3d.

† Charge first 100 cubic feet at £4 3s. 6d. per 40 cubic feet and the balance of the measurement at  
 £3 0s. 6d. per 40 cubic feet.

NORTH ISLAND MAIN LINE AND BRANCHES—continued

15. Through Booking Between Wellington and Stations Elevation-Blenheim Inclusive—continued

Class of Goods	Per Ton of or Charge as Indicated	Rate
<i>General Cargo—continued</i>		
*Washing-machines		
*Water heaters, gas or electric		£ s. d.
Wellington-Blenheim .. .. .	40 cubic feet ..	4 18 0
Blenheim-Wellington .. .. .	40 cubic feet ..	5 3 0
*Woolpacks and cornsacks (New Zealand manufacture), Wellington-Blenheim	40 cubic feet ..	4 13 0
Empties—		
*Cases, crates, and furniture transports, returned, knocked down	40 cubic feet ..	3 18 6
*Sacks, empty return or used, in sacks or bales	40 cubic feet ..	4 10 6
*Bottles, in sacks, cases, or crates .. .. .	40 cubic feet ..	4 15 0
Empty returns, not otherwise specified .. .. .	40 cubic feet or 20 cwt (whichever greater)	2 13 0
		(Minimum charge 5s. 6d.)
*Empty return cartons, collapsed or otherwise .. .. .	40 cubic feet ..	} At the rate for general cargo, n.o.s.
Empty return acid containers .. .. .	40 cubic feet ..	
<i>Dangerous Cargo</i>		
Acids, bisulphide of ammonia, batteries charged with acid, carbide of calcium, gases in cylinders, phosphorous, tetra-ethyl lead—		
Wellington-Blenheim .. .. .	40 cubic feet ..	6 9 6
Blenheim-Wellington .. .. .	40 cubic feet ..	6 15 0
Minimum charge for foregoing .. .. .		0 10 0
Ammunition, gun .. .. .		Special quotation.
Bombs, live, without fuses .. .. .		Special quotation.
*Cellulose		
*Cleaning and lighting fluids		
Wellington-Blenheim .. .. .	40 cubic feet or 20 cwt (whichever greater)	5 5 6
Blenheim-Wellington .. .. .		5 11 0
Dynamite, detonators, gelignite, and powder .. .. .		Special quotation.
*Fuel oil, in drums, Wellington-Blenheim .. .. .	40 cubic feet ..	4 17 6
Fuses, cordite charges .. .. .		Special quotation.
*Inflammable oil, Wellington-Blenheim—		
In cases .. .. .	Case .. .. .	0 6 0
In drums .. .. .	40 cubic feet ..	5 5 6
*Lacquer (with a flash point of less than 150°)		
*Paint enamel (with a flash point of less than 150°)		
*Rubber cement .. .. .		
*Solution, rubber and tire .. .. .		
Wellington-Blenheim .. .. .	40 cubic feet or 20 cwt (whichever greater)	5 5 6
Blenheim-Wellington .. .. .		5 11 0
<i>Timber</i>		
Timber .. .. .		Special quotation.
<i>Wool and Skins</i>		
*Rabbit-skins, in bales, undumped .. .. .	40 cubic feet ..	At the rate for general cargo, n.o.s.
Sheep-skins—		
In bales, dumped .. .. .	40 cubic feet ..	4 15 0
In woolpacks, undumped .. .. .	Bale .. .. .	2 1 6

\* Minimum charge—  
 For consignments up to 5 cwt or 10 cubic feet .. As for small lots of general cargo.  
 For consignments exceeding 5 cwt or 10 cubic feet .. £1 5s. 3d.

NORTH ISLAND MAIN LINE AND BRANCHES—*continued*15. Through Booking Between Wellington and Stations Elevation-Blenheim Inclusive—*continued*

Class of Goods	Per Ton of or Charge as Indicated	Rate
<i>Wool and Skins—continued</i>		
Wool, in bales—		£ s. d.
Double-dumped .. .. .	Each .. .. .	2 10 0
Single-dumped .. .. .	Each .. .. .	1 7 6
Undumped .. .. .	Each .. .. .	1 10 0
In fadges .. .. .	Each .. .. .	1 1 6
Wool, in bags .. .. .	Each .. .. .	0 7 0
<i>Hemp, Hides, Pelts, Tallow, Tow</i>		
†Hemp, in bales, dumped or undumped—		
Wellington-Blenheim .. .. .	20 cwt .. .. .	5 12 6
Blenheim-Wellington .. .. .	20 cwt .. .. .	5 17 0
*Hides, in sacks .. .. .	40 cubic feet .. .. .	4 17 6
*Pelts, in casks .. .. .	20 cwt .. .. .	4 19 6
*Tallow, in casks or drums .. .. .	20 cwt .. .. .	4 17 6
†Tow, in bales, dumped or undumped—		
Wellington-Blenheim .. .. .	20 cwt .. .. .	5 14 6
Blenheim-Wellington .. .. .	20 cwt .. .. .	5 19 0
<i>Produce</i>		
*Beans .. .. .	20 cwt .. .. .	5 0 0
*Barley, not otherwise specified, and oats .. .. .	20 cwt .. .. .	5 1 6
*Barley, pearl, in small bags .. .. .	20 cwt .. .. .	5 0 0
*Bran .. .. .	2,000 lb .. .. .	5 1 0
*Chaff .. .. .	Sack .. .. .	0 5 8
*Flour, n.o.s. .. .. .	2,000 lb .. .. .	4 8 0
*Flour, in 25 lb bags .. .. .	2,000 lb .. .. .	4 13 0
Hay and straw .. .. .	20 cwt .. .. .	6 9 6
*Kumeras, in small bags .. .. .	20 cwt .. .. .	5 4 6
*Linseed meal, linmeal, linseed offal meal—		
In sacks not exceeding 120 lb each .. .. .	20 cwt .. .. .	5 4 6
In sacks exceeding 120 lb each .. .. .	20 cwt .. .. .	4 19 0
*Maize and rye-corn .. .. .	20 cwt .. .. .	4 19 6
*Malt .. .. .	20 cwt .. .. .	5 4 6
*Meal, lucerne .. .. .	20 cwt .. .. .	6 16 6
*Oatmeal .. .. .	2,000 lb .. .. .	4 18 6
*Onions, in sacks .. .. .	20 cwt .. .. .	5 7 0
*Onions, in small bags and cases .. .. .	40 cubic feet .. .. .	At the rate for general cargo, n.o.s.
*Peas, not otherwise specified .. .. .	20 cwt .. .. .	4 12 6
*Peas, split, in small bags .. .. .	20 cwt .. .. .	5 0 0
*Pollard .. .. .	2,000 lb .. .. .	4 17 0
*Potatoes—		
In sacks .. .. .	20 cwt .. .. .	5 7 6
New, in small bags .. .. .	20 cwt .. .. .	5 13 6
*Pumpkins—		
In sacks with mouths closely sewn .. .. .	Sack .. .. .	0 9 0
In sacks with mouths not closely sewn .. .. .	Sack .. .. .	0 14 0
*Vegetables—		
Carrots, parsnips, swedes, and turnips in sugar bags .. .. .	20 cwt .. .. .	5 13 6

\* Minimum charge—

For consignments up to 5 cwt or 10 cubic feet .. .. .

As for small lots of general cargo.

For consignments exceeding 5 cwt or 10 cubic feet .. .. .

£1 5s. 3d.

† Not exceeding 150 cubic feet per 20 cwt.



NORTH ISLAND MAIN LINE AND BRANCHES—*continued*15. Through Booking Between Wellington and Stations Elevation-Blenheim Inclusive—*continued*

Class of Goods	Per Ton of or Charge as Indicated	Rate
<i>Produce—continued</i>		
<i>*Vegetables—continued</i>		
Not otherwise specified—		
In sacks with mouths closely sewn ..	Sack .. ..	£ s. d. 0 9 6
In sacks with mouths not closely sewn ..	Sack .. ..	0 15 0
In packages other than above ..	40 cubic feet ..	At the rate for general cargo, n.o.s.
*Walnuts .. .. .	40 cubic feet ..	At the rate for general cargo, n.o.s.
*Wheat, in sacks .. .. .	20 cwt .. ..	4 14 6
*Wheatmeal .. .. .	2,000 lb .. ..	4 12 6
<i>Seeds—</i>		
*Browntop, dogstail, fescue, rye-grass ..	20 cwt .. ..	7 14 0
*Cabbage, clover (New Zealand), cow-grass, lucerne, swede, turnip .. .. .	20 cwt .. ..	6 2 0
*Carrot .. .. .	20 cwt .. ..	5 14 0
*Clover (Australian), in sacks not exceeding 140 lb each .. .. .	20 cwt .. ..	6 2 0
*Cocksfoot, not exceeding 27 sacks to 20 cwt ..	20 cwt .. ..	8 0 0
*Lupin .. .. .	20 cwt .. ..	5 2 0
*Mangold (beet), parsnip .. .. .	20 cwt .. ..	8 0 0
*Onion .. .. .	20 cwt .. ..	8 0 0
*Poa pratensis .. .. .	20 cwt .. ..	7 11 0
*Rape .. .. .	20 cwt .. ..	5 6 6
*Seed heads (unthreshed) .. .. .	20 cwt .. ..	8 0 0
*Seeds, vegetable, n.o.s. .. .. .	20 cwt .. ..	8 0 0
*Tares, in sacks .. .. .	20 cwt .. ..	5 15 0

*\* Minimum charge—*

For consignments up to 5 cwt or 10 cubic feet

For consignments exceeding 5 cwt or 10 cubic feet

.. As for small lots of general cargo.

.. £1 5s. 3d.

The Department is not responsible for steamer services, and is not answerable for their fulfilment.

## SOUTH ISLAND MAIN LINE AND BRANCHES

## 16. Coal

Coal, in minimum wagon loads as prescribed in reg. 78, General Scale of Charges, will be charged:

From	To	Rate Per Ton
<i>Omit:</i>		£ s. d.
*Blackball .. ..	Greymouth .. ..	0 11 3
*Roa .. ..	Greymouth .. ..	0 13 2
*Reefton .. ..	Greymouth .. ..	0 19 1
*Cronadun .. ..	Greymouth .. ..	1 1 1
†Conn's Creek .. ..	Waimate .. ..	3 14 5
†Ngakawau .. ..	Waimate .. ..	3 15 2
*Brunner .. ..	Greymouth .. ..	0 8 3
*Wallsend .. ..	Greymouth .. ..	0 8 3
*Dobson .. ..	Greymouth .. ..	0 8 3
†Dobson .. ..	Bluff .. ..	3 11 10
*Rapahoe .. ..	Greymouth .. ..	0 8 3
*Dunollie .. ..	Greymouth .. ..	0 8 3
*Rewanui .. ..	Greymouth .. ..	0 9 9
<i>Insert:</i>		
*Blackball .. ..	Greymouth .. ..	0 10 9
*Roa .. ..	Greymouth .. ..	0 12 8
*Reefton .. ..	Greymouth .. ..	0 18 7
*Cronadun .. ..	Greymouth .. ..	1 0 7
†Ngakawau .. ..	Temuka .. ..	3 6 3
†Seddonville and Mokihi- nui Mine	Timaru .. ..	3 6 3
†Seddonville and Moki- hinui Mine	Smithfield .. ..	3 6 3
	Pareora .. ..	3 6 3
*Brunner .. ..	Greymouth .. ..	0 7 9
*Wallsend .. ..	Greymouth .. ..	0 7 9
†Wallsend .. ..	Bluff .. ..	3 11 10
*Dobson .. ..	Greymouth .. ..	0 7 9
*Rapahoe .. ..	Greymouth .. ..	0 7 9
*Dunollie .. ..	Greymouth .. ..	0 7 9
*Rewanui .. ..	Greymouth .. ..	0 9 3

SOUTH ISLAND MAIN LINE AND BRANCHES—*continued*

## 17. Benzine, Kerosene, etc., in Owner's Tank Wagons

Omit this regulation, and substitute the following:

## 17. Benzine, Kerosene, etc., in Owner's Tank Wagons

The charges for the conveyance of benzine, kerosene, and similar mineral oils, also crude, residual, or fuel oils in owner's tank wagons are:

From		To		Benzine, Kerosene, and Similar Mineral Oils. Rate per Ton	<i>b</i> Crude, Residual, or Fuel Oils. Rate per Ton
				£ s. d.	£ s. d.
Lyttelton	.. ..	Christchurch	.. ..	0 10 2	0 10 2
"	.. ..	Addington	.. ..	0 11 10	.. ..
"	.. ..	Blenheim	.. ..	.. ..	4 1 0
"	.. ..	Nelson	.. ..	6 11 7	.. ..
"	.. ..	Culverden	.. ..	1 19 6	1 19 6
"	.. ..	Middleton	.. ..	0 11 10	0 11 10
"	.. ..	Sockburn	.. ..	0 11 10	0 11 10
"	.. ..	Ashburton	.. ..	1 14 6	1 14 6
"	.. ..	Timaru	.. ..	2 14 11	2 14 11
"	.. ..	Invercargill	.. ..	7 3 4	.. ..
Woolston	.. ..	Ashburton	.. ..	1 14 6	1 14 6
Dunedin	.. ..	Kurow	.. ..	.. ..	3 3 0
"	.. ..	Oamaru	.. ..	3 2 10	.. ..
"	.. ..	Cromwell	.. ..	4 5 9	.. ..
"	.. ..	Alexandra	.. ..	3 19 9	.. ..
"	.. ..	Gore	.. ..	2 12 5	2 12 5
"	.. ..	Invercargill	.. ..	2 19 10	2 19 10
Bluff	.. ..	Gore	.. ..	2 9 1	.. ..
"	.. ..	Invercargill	.. ..	0 9 3	0 9 3

*b* Oils having a specific gravity of 8 lb or more per gallon. (Fuel or crude oils having a specific gravity of less than 8 lb per gallon will be charged as kerosene.)

SOUTH ISLAND MAIN LINE AND BRANCHES—*continued*

18. Miscellaneous

From	To	Description of Goods	Rate
<i>Omit</i>			
Stations Christchurch, Hornby, Papanui inclusive	Any station in the South Island	Impregnated or kiln-dried timber (previously conveyed by rail from West Coast stations to stations Christchurch, Hornby, or Papanui inclusive) *	Class K less 20 per cent.
	Blenheim-Elevation and intermediate stations	Picton for shipment	Classes C, D, and G
			£1 15s. 6d. per ton, including wharfage and handling at ship's side. The charges will be computed in accordance with reg. 127, General Scale of Charges. Small lots will be charged as follows:
			Not Exceeding:
			Cwt    Cu. ft    s.    d.
			½ or 1                    2    0
			1 or 2                    2    6
			1½ or 3                  3    3
			2 or 4                    4    0
			2½ or 5                  5    0
			3 or 6                    5    6
			3½ or 7                  6    0
Picton ..	Blenheim-Elevation and intermediate stations	Goods of Classes C, D, and G, ex ship. Owner's risk	4 or 8                    6    0
			4½ or 9                  7    0
			5 or 10                  9    0
Dunedin ..	Any station in the the South Island	Impregnated sawn timber (previously railed direct to the treatment plant at Dunedin for distances of not less than 50 miles)	Class K less 20 per cent.
Bluff ..	Invercargill ..	Newsprint, ex ship, direct, or from ship to store at Bluff, and subsequently from store to Invercargill. Owner's risk	£1 17s. 10d. per ton dead-weight, including handling at ship's side and sorting as provided in reg. 96, General Scale of Charges.
<i>Insert:</i>			
Blenheim-Elevation and intermediate stations	Picton for shipment	Classes C, D, and G	£1 12s. 6d. per ton, including wharfage and handling at ship's side. The charges will be computed in accordance with reg. 127, General Scale of Charges. Small lots will be charged as follows:
			Not Exceeding:
			Cwt    Cu. ft    s.    d.
			½ or 1                    1    9
			1 or 2                    2    3
			1½ or 3                  3    0
			2 or 4                    3    9
			2½ or 5                  4    9
			3 or 6                    5    3
			3½ or 7                  5    9
			4 or 8                    6    6
Picton ..	Blenheim-Elevation and intermediate stations	Goods of classes C, D, and G, ex ship. Owner's risk	4½ or 9                  7    6
			5 or 10                  8    3

SOUTH ISLAND MAIN LINE AND BRANCHES—*continued*18. Miscellaneous—*continued*

From	To	Description of Goods	Rate
<i>Insert—continued</i> Bluff .. ..	Invercargill ..	Newsprint, ex ship. Owner's risk	£1 17s. 10d. per ton dead-weight, including handling at ship's side and sorting as provided in reg. 96, General Scale of Charges.

## 25. Through Traffic, Mines Department's Line at Blackball

<i>Omit:</i>	Minerals (except coal charged at the local rate of 13s. 2d. per ton from Roa to Greymouth, as specified in reg. 16) per ton .. ..	s. d. 2 0
<i>Insert:</i>	Minerals (except coal charged at the local rate of 12s. 8d. per ton from Roa to Greymouth, as specified in reg. 16) per ton .. ..	2 0

As witness my hand this 5th day of December 1958.

M. MOOHAN,

Minister of Railways.

